

D2 class Instruction Diagrams 2

Platform / Footplate forming

'A' denotes areas that need to be annealed

curved shape forms L strake
soldered at rear edge of raised band

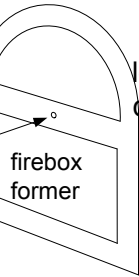
front piece leans
back against curved
part

Roof

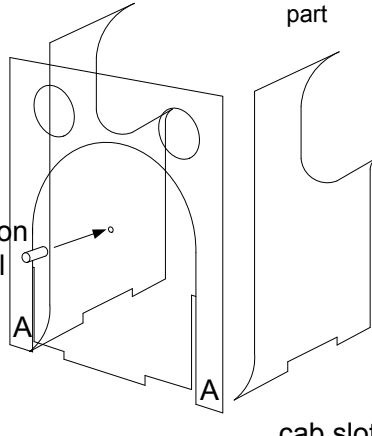
side & front edges
fold up

rear bracing
piece cut off
after completion

location
dowel



location
dowel



cab slots

smokebox former slots

rear carrying
wheel slot

front carrying
wheel slot

body to chassis
front attachment hole
2mm nut & bolt

dotted lines =
half etched lines
below footplate
locating buffer beam
and valences

alignment dowel hole

handrail knob holes

boiler clack valve holes

smokebox wrapper
fits over boiler end

location
dowel

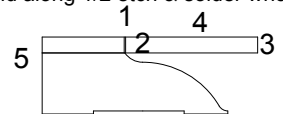
boiler butt seam
not visible

boiler front former
shown in position

smokebox saddle

Suggested splasher
bend order:

1. bend down 1/2 etch & solder corner
2. bend up reverse curve over thin rod
3. bend up annealed tail similarly
4. bend splasher contour curve over larger former
5. bend along 1/2 etch & solder whole



location dowel
on smokebox door

later batch buffer beam

early batch buffer beam

small drill
as a former
for reverse curve

