

**LOCO CHASSIS CONSTRUCTION DIAGRAMS**

Diagram 16 i - cab fittings etc.  
(for more details refer to photos)

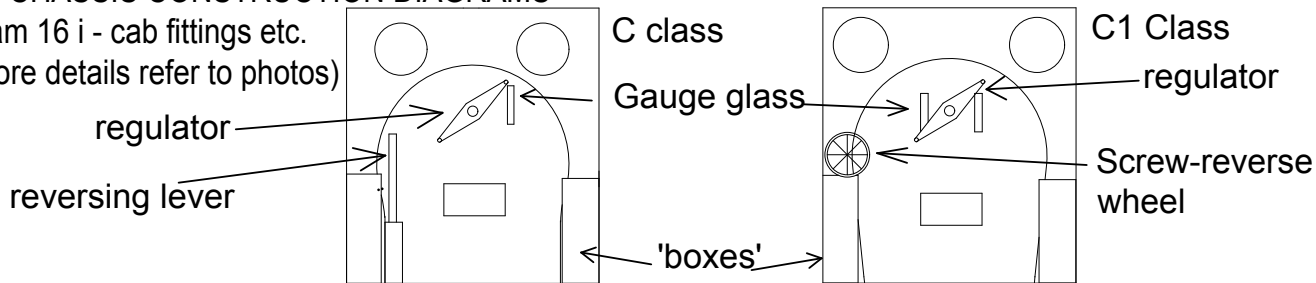
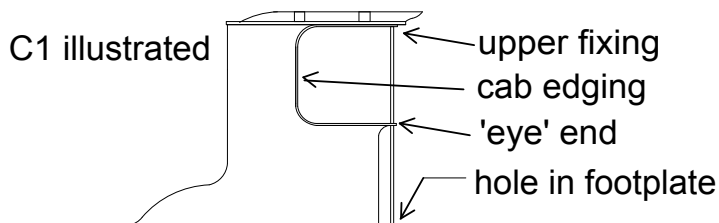
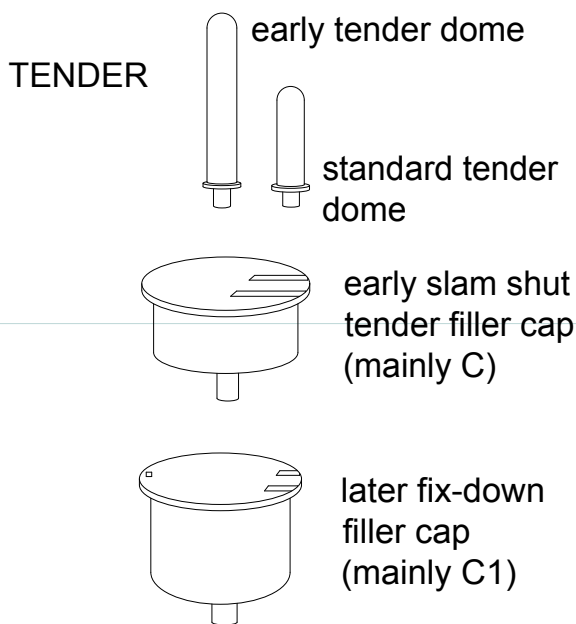
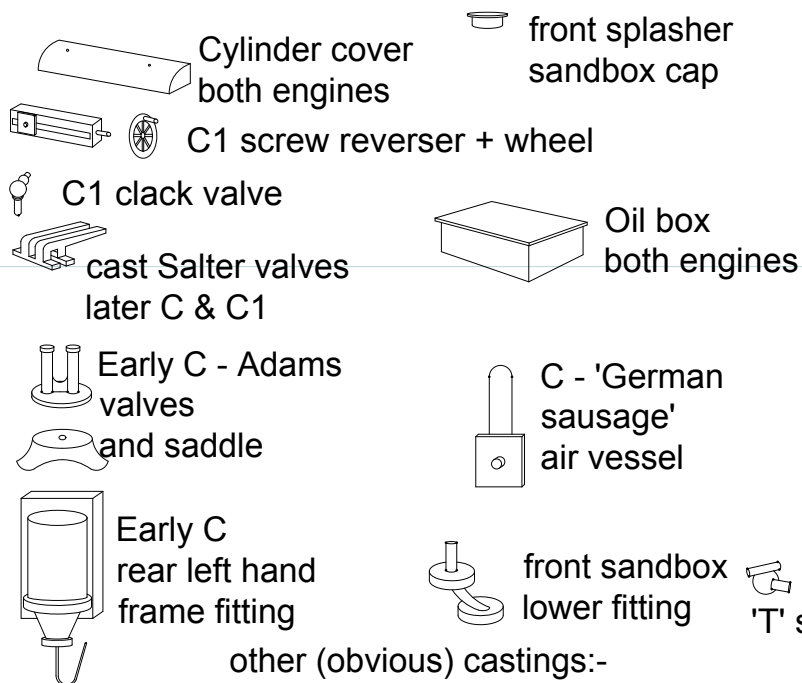


Diagram 16 ii  
Cab edging & handrail pillar



**CASTINGS** - only the less obvious ones are illustrated.

**LOCO NOT TO SCALE!**



other (obvious) castings:-

Whistle, chimney + cap, standard Stroudley dome, boiler backhead & regulator, smokebox doors, Westinghouse brake pump, brake pipes

**TENDER**

Fig 1 / Diagram 6

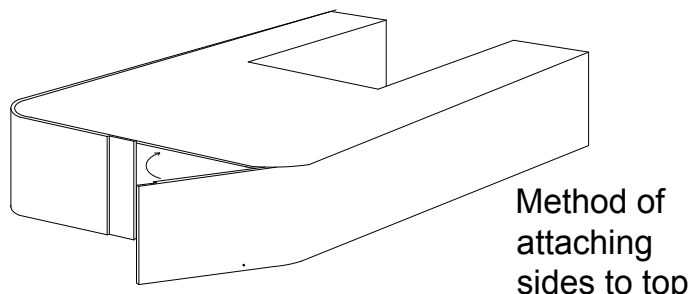
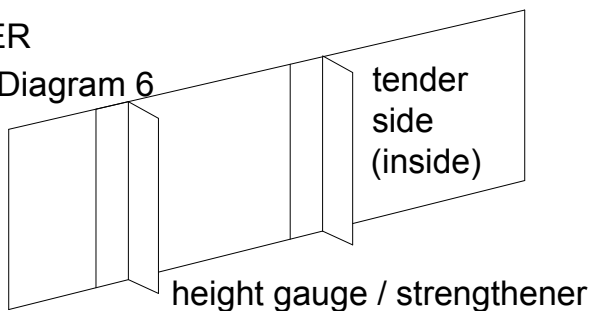
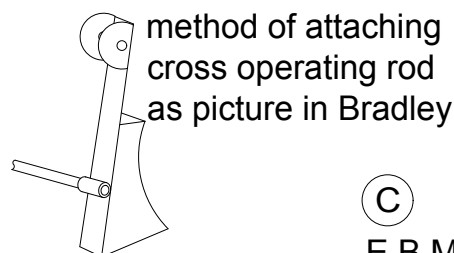
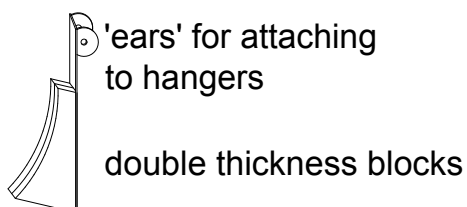


Diagram 9  
Tender brakes



**LOCO CHASSIS CONSTRUCTION DIAGRAMS**

Diagram 16 i - cab fittings etc.  
(for more details refer to photos)

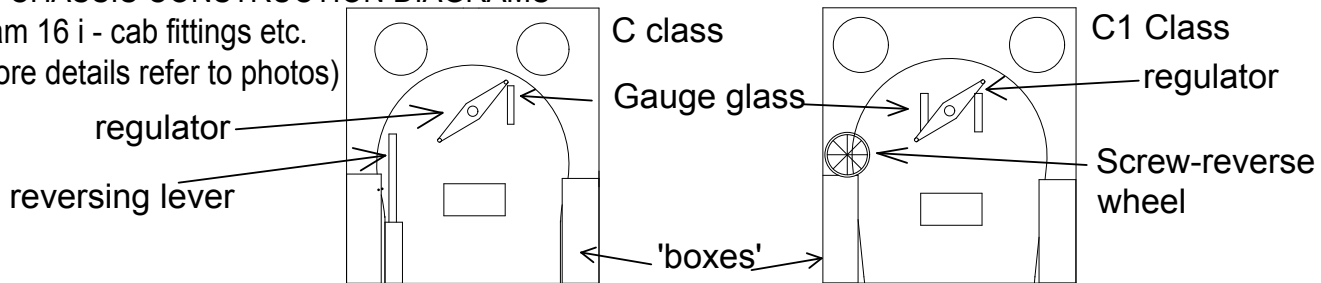
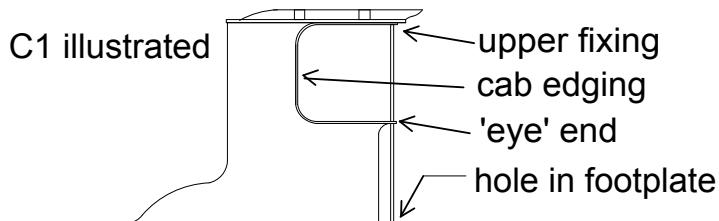
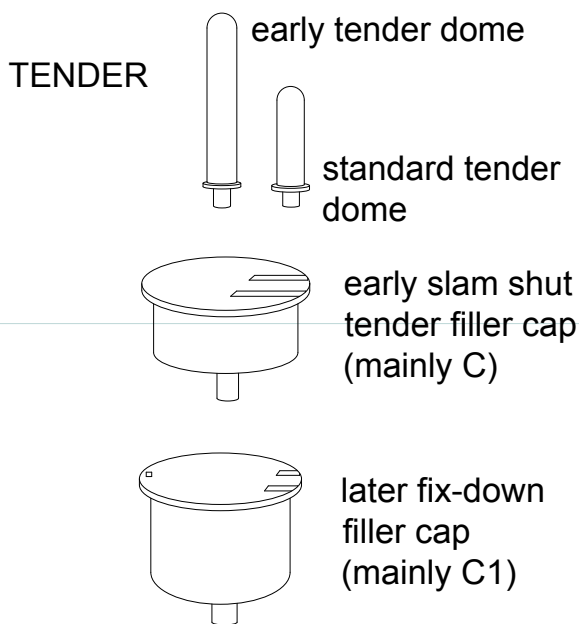
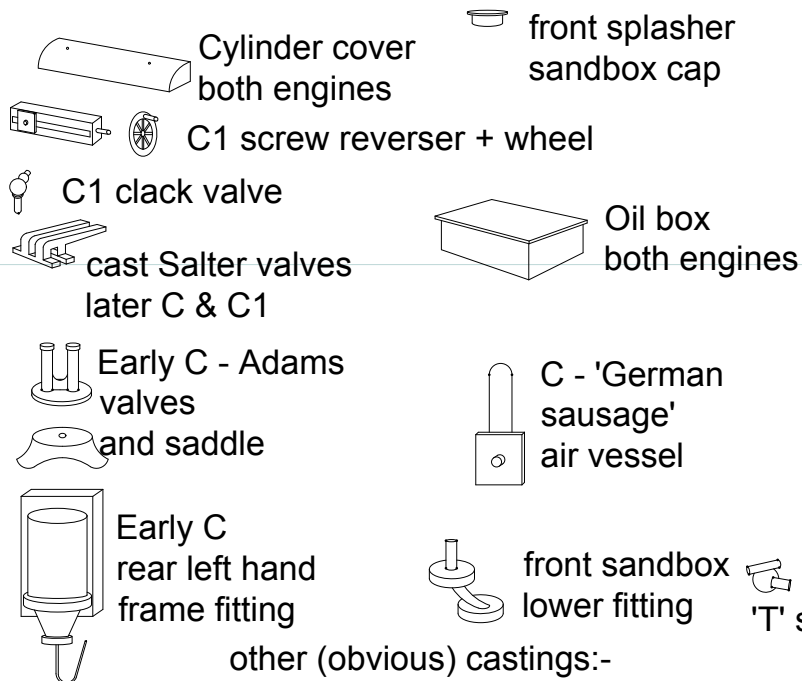


Diagram 16 ii  
Cab edging & handrail pillar



**CASTINGS** - only the less obvious ones are illustrated.

LOCO NOT TO SCALE!



other (obvious) castings:-

Whistle, chimney + cap, standard Stroudley dome, boiler backhead & regulator, smokebox doors, Westinghouse brake pump, brake pipes

TENDER

Fig 1 / Diagram 6

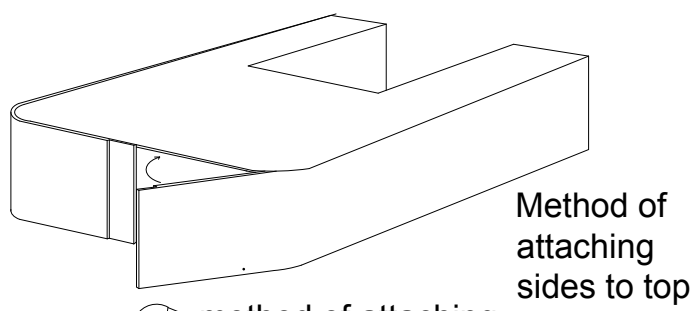
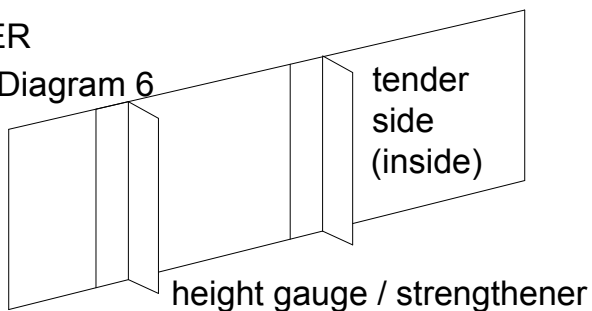
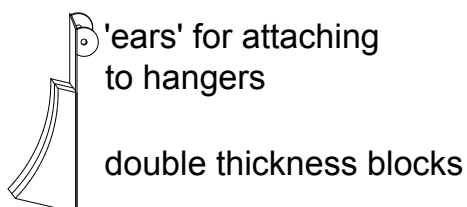


Diagram 9  
Tender brakes



©

E.B.Models 2003